

Ordnance Survey, (c) Crown Copyright 2019. All rights reserved. Licence number 100022432

C	22/03/21	Redline boundary has been adjusted	JB	JB
B	19/03/21	Redline boundary has been adjusted	JB	JB
A	17/03/21	Redline boundary has been adjusted	JB	JB
-	03/02/20	Original Drawing	JB	JB
Rev	Date	Revision Description	Drawn By	Approved By



6 Pioneer Court, Darlington, DL1 4WD
t: 01325 464 111
e: studio@adgarchitects.co.uk
w: www.adgarchitects.co.uk

Client:

The Halebourne Group

Project Information

Proposed Care Development
The Grey House Preparatory School, Hartley Wintney

Drawing Title

Existing Site Location Plan

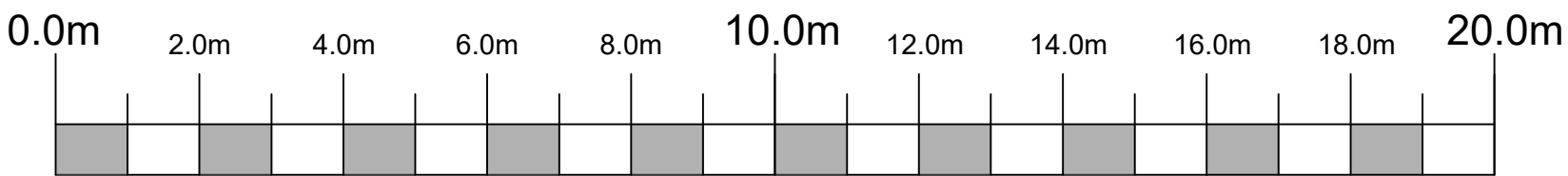
A1 Scale	A3 Scale	
	1:1250	

Job Number	Drawing Number	Revision
H.19.12	(9-) 1	C

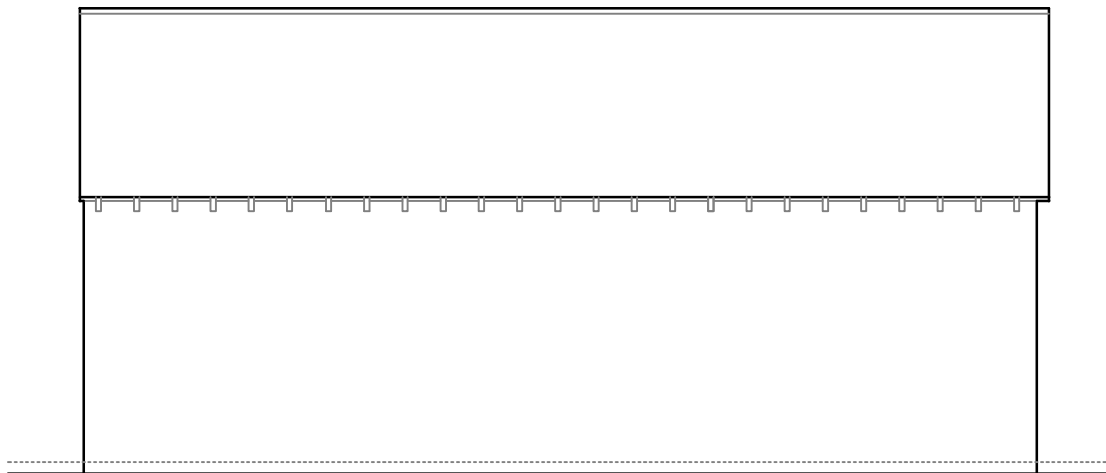
Drawing Issue

PLANNING

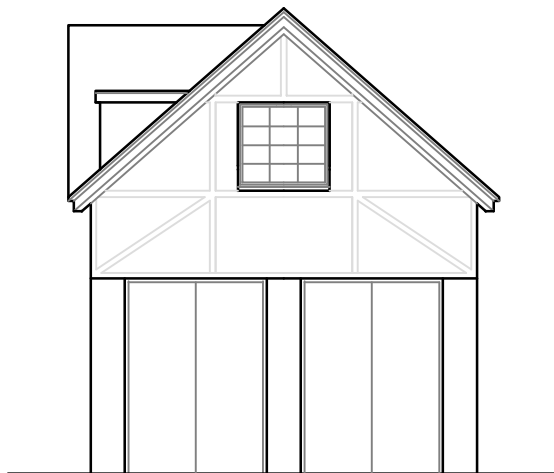
© Copyright 2018 ADG Architects Ltd.



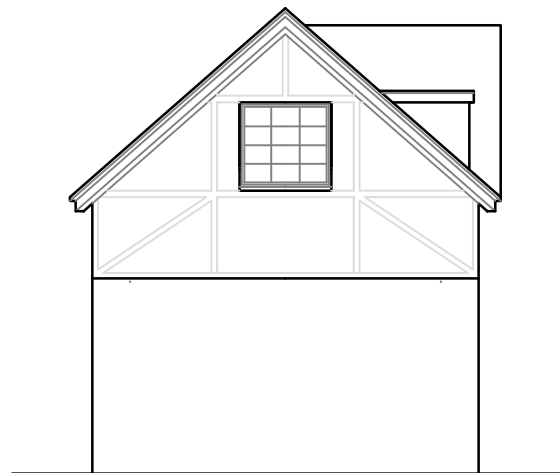
SOUTH WEST ELEVATION



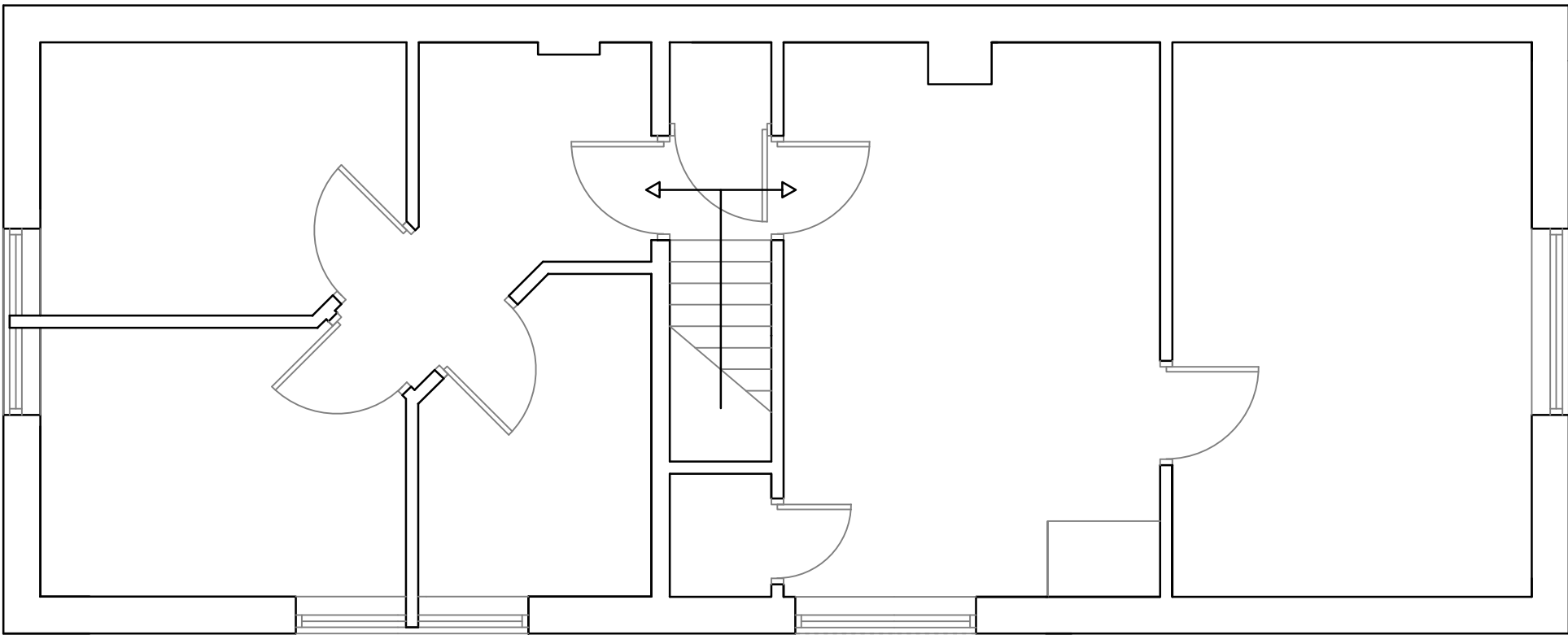
NORTH EAST ELEVATION



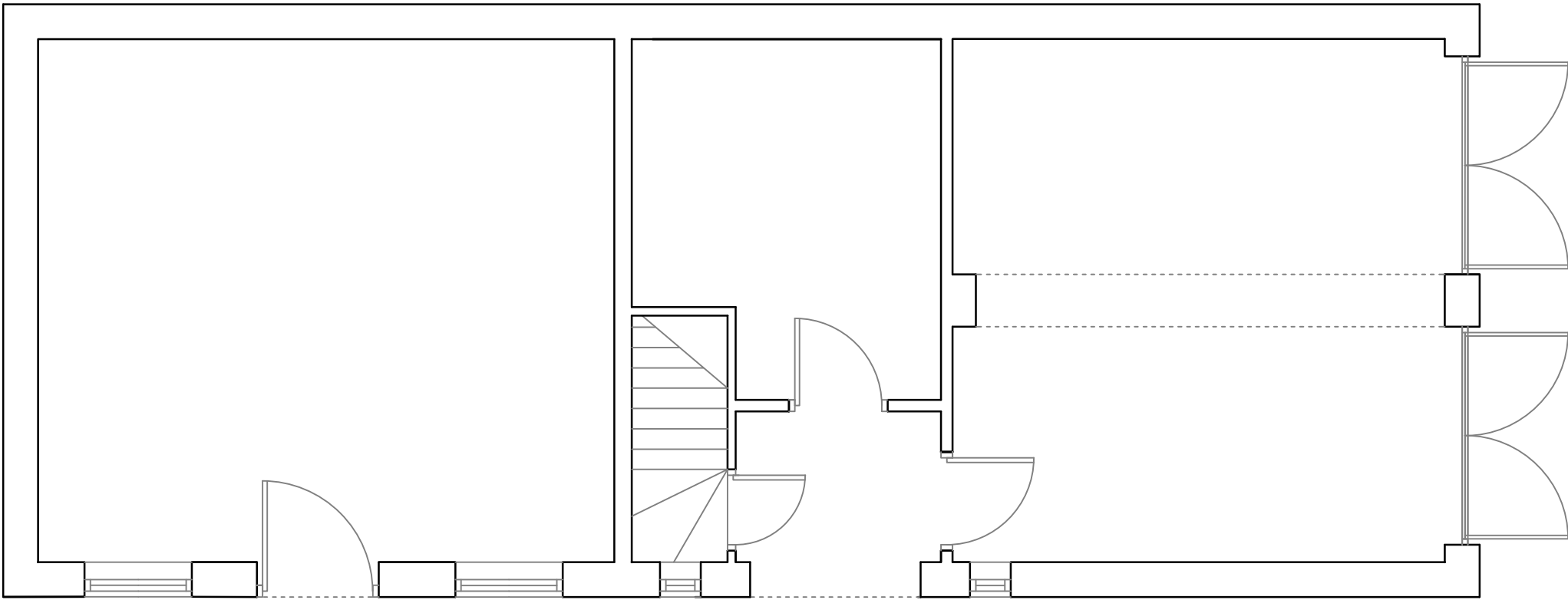
SOUTH EAST ELEVATION



NORTH WEST ELEVATION



FIRST FLOOR PLAN



GROUND FLOOR PLAN



SITE PLAN 1:250

A	13/03/20	Scale Bar added	JB	JB
-	03/01/20	Original Drawing	JB	JB
Rev	Date	Revision Description	Drawn By	Approved By

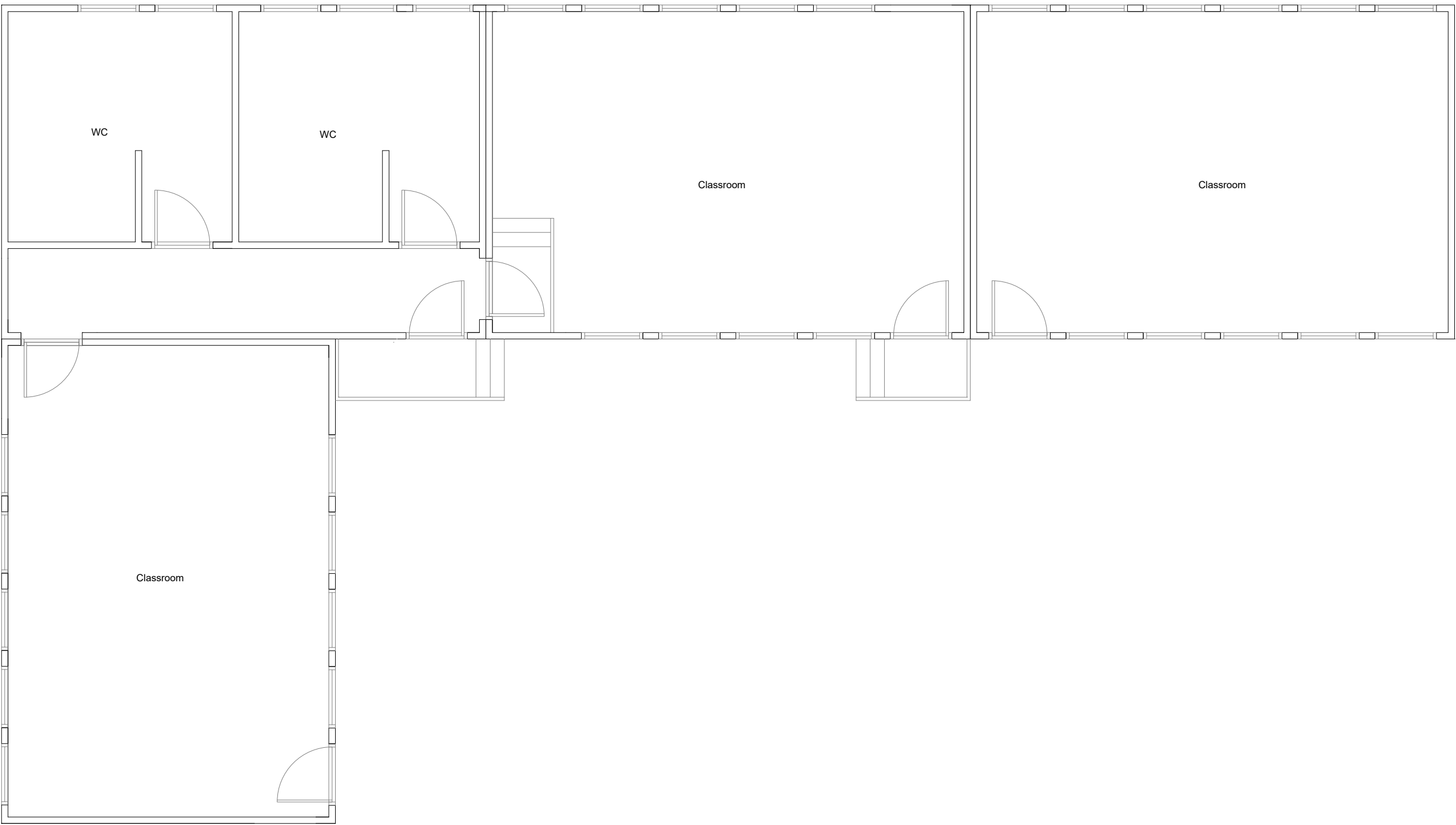


ARCHITECTS

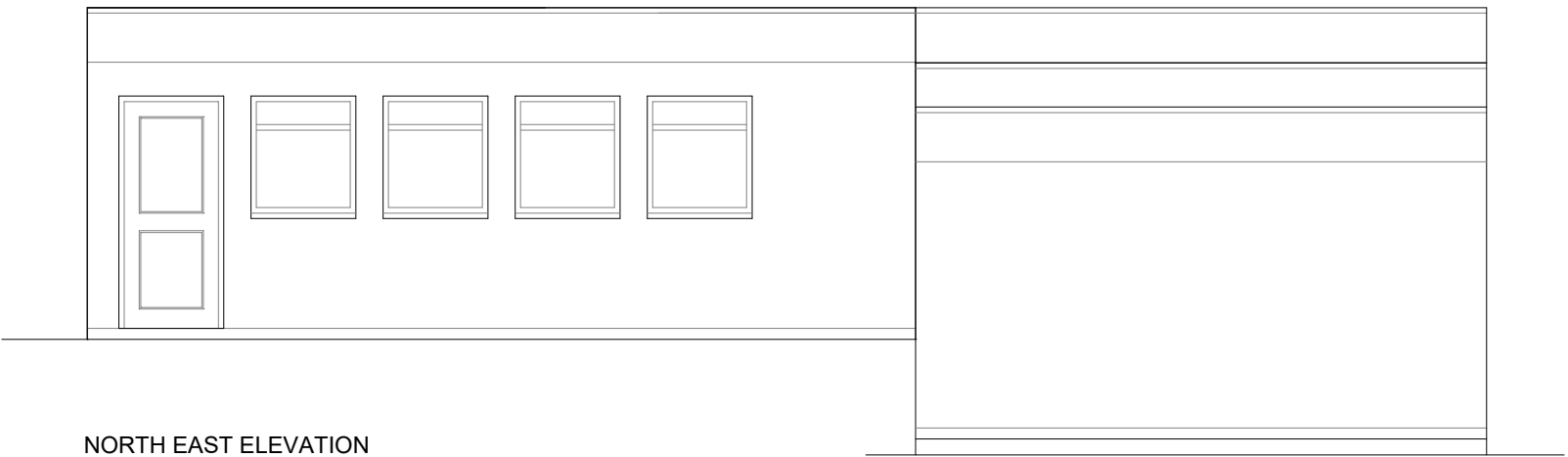
6 Pioneer Court, Darlington, DL1 4WD
t: 01325 464 111
e: studio@adgarchitects.co.uk
w: www.adgarchitects.co.uk

Client				
The Halebourne Group				
Project Information				
Proposed Care Development The Grey House Preparatory School, Hartley Wintney				
Drawing Title				
Existing build plans and elevations Garage / workshop				
A1 Scale		A3 Scale		
1:100		1:200		
Job Number		Drawing Number		Revision
H.19.12		00-8		A
Drawing Issue				
PLANNING				

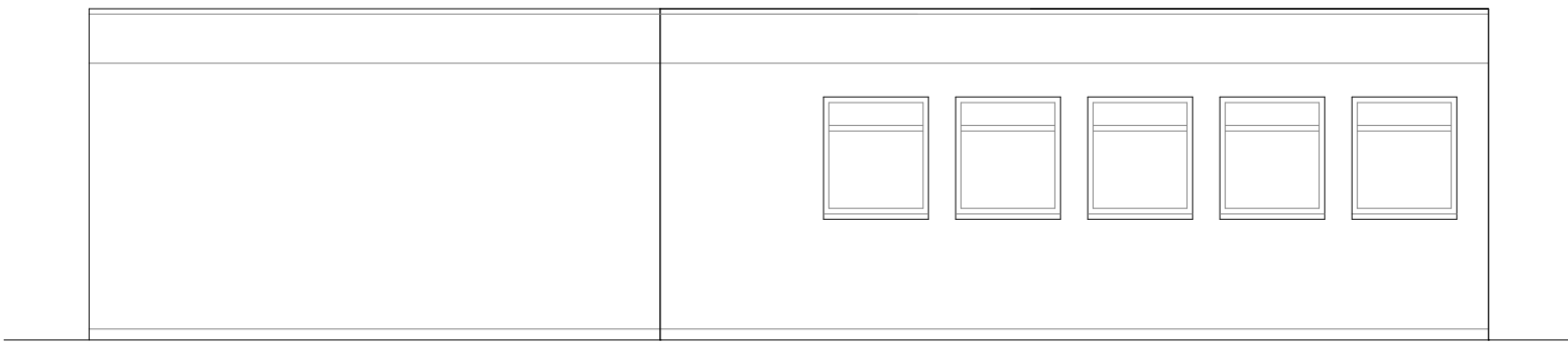
© Copyright 2018 ADG Architects Ltd



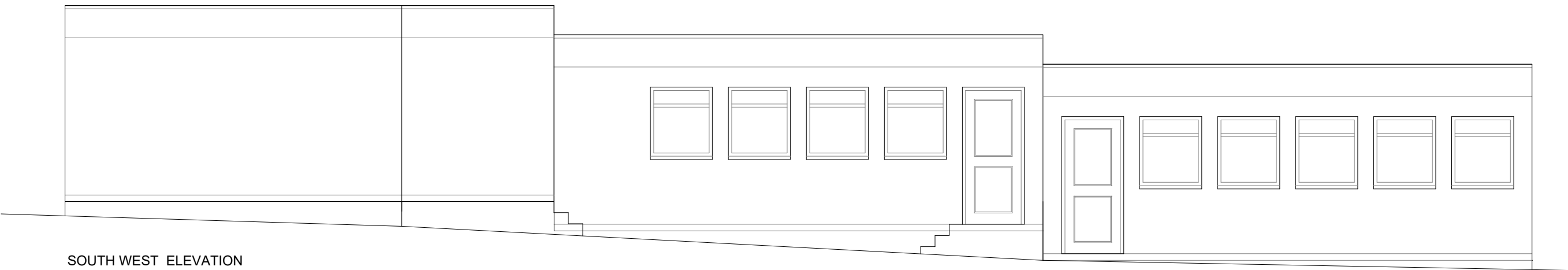
GROUND FLOOR PLAN



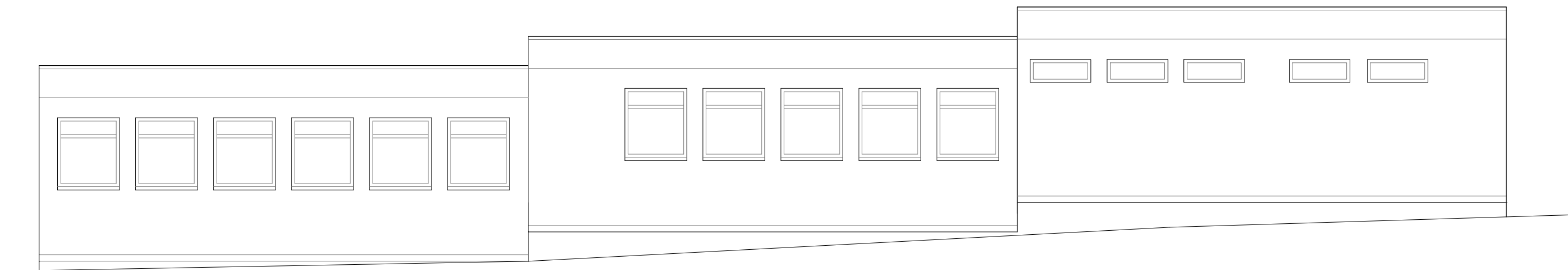
NORTH EAST ELEVATION



SOUTH EAST ELEVATION



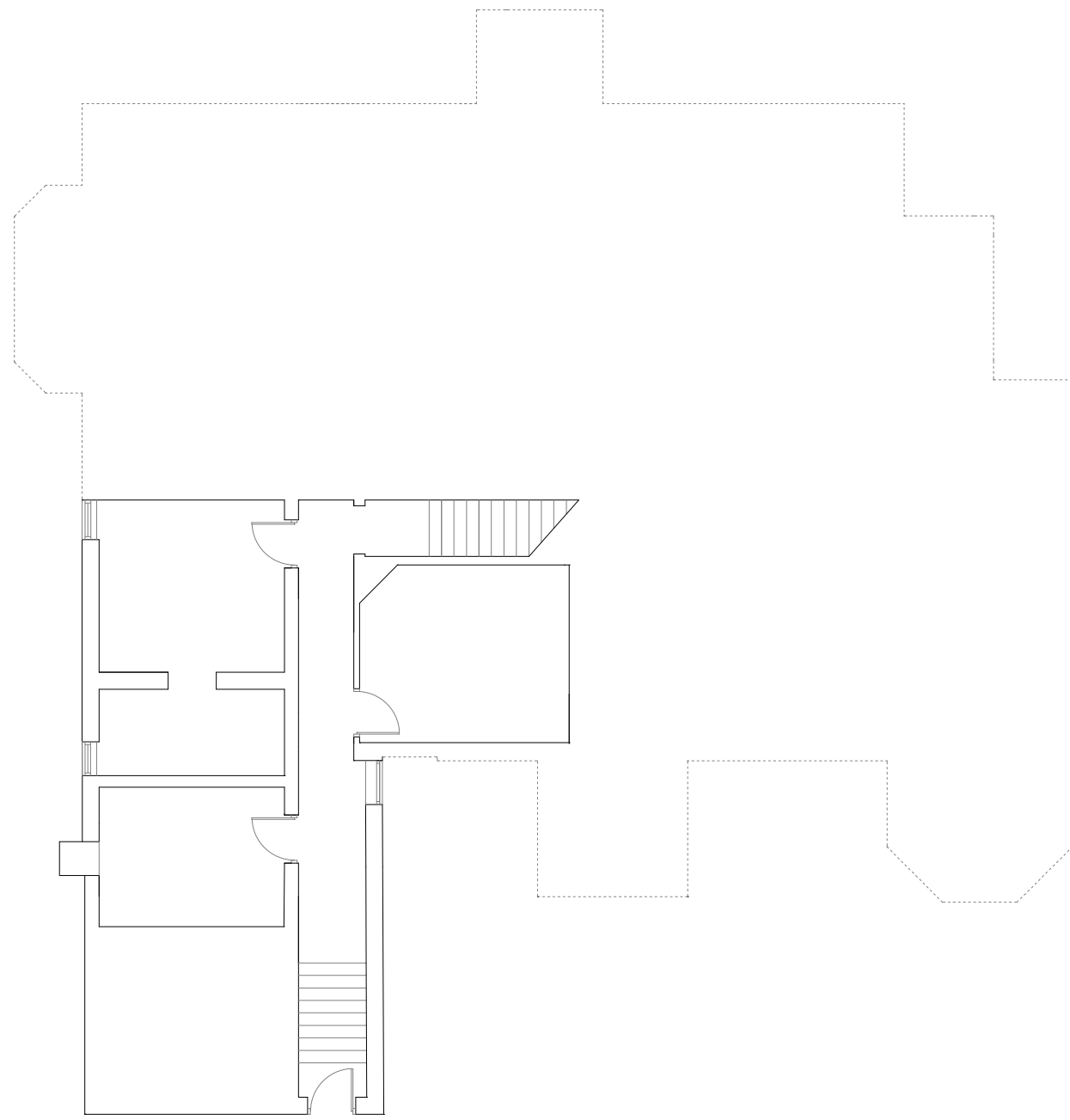
SOUTH WEST ELEVATION



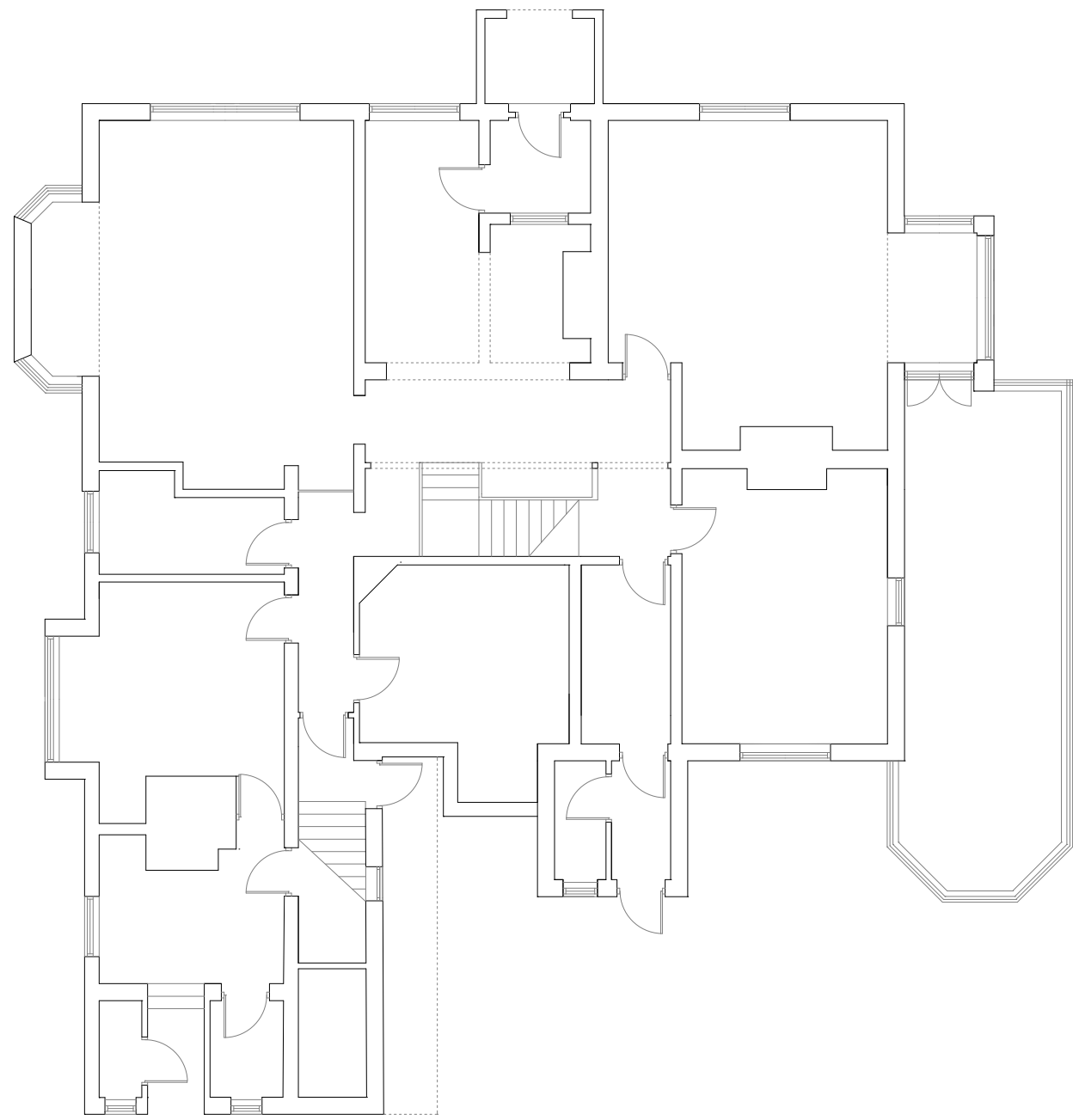
NORTH WEST ELEVATION

	12/03/21	Drawing has been updated.	CM	JB
-	03/01/20	Original Drawing	JB	JB
Rev	Date	Revision Description	Drawn By	Approved By
<div><div><div><div><div></div><div></div></div><div><div></div><div></div></div></div><div>ARCHITECTS</div></div><div>6 Pioneer Court, Darlington, DL1 4WD t: 01320 664 111 e: studio@edgearchitects.co.uk w: www.edgearchitects.co.uk</div></div>				
Client				
The Halebourne Group				
Project Information				
Proposed Care Development				
The Grey House Preparatory School, Hartley Wintney				
Drawing Title				
Existing build plans and elevations				
School Building				
A1 Scale		A3 Scale		
1:100				
Job Number	Drawing Number		Revision	
H.19.12	00-9		A	
Drawing Issue				
PLANNING				

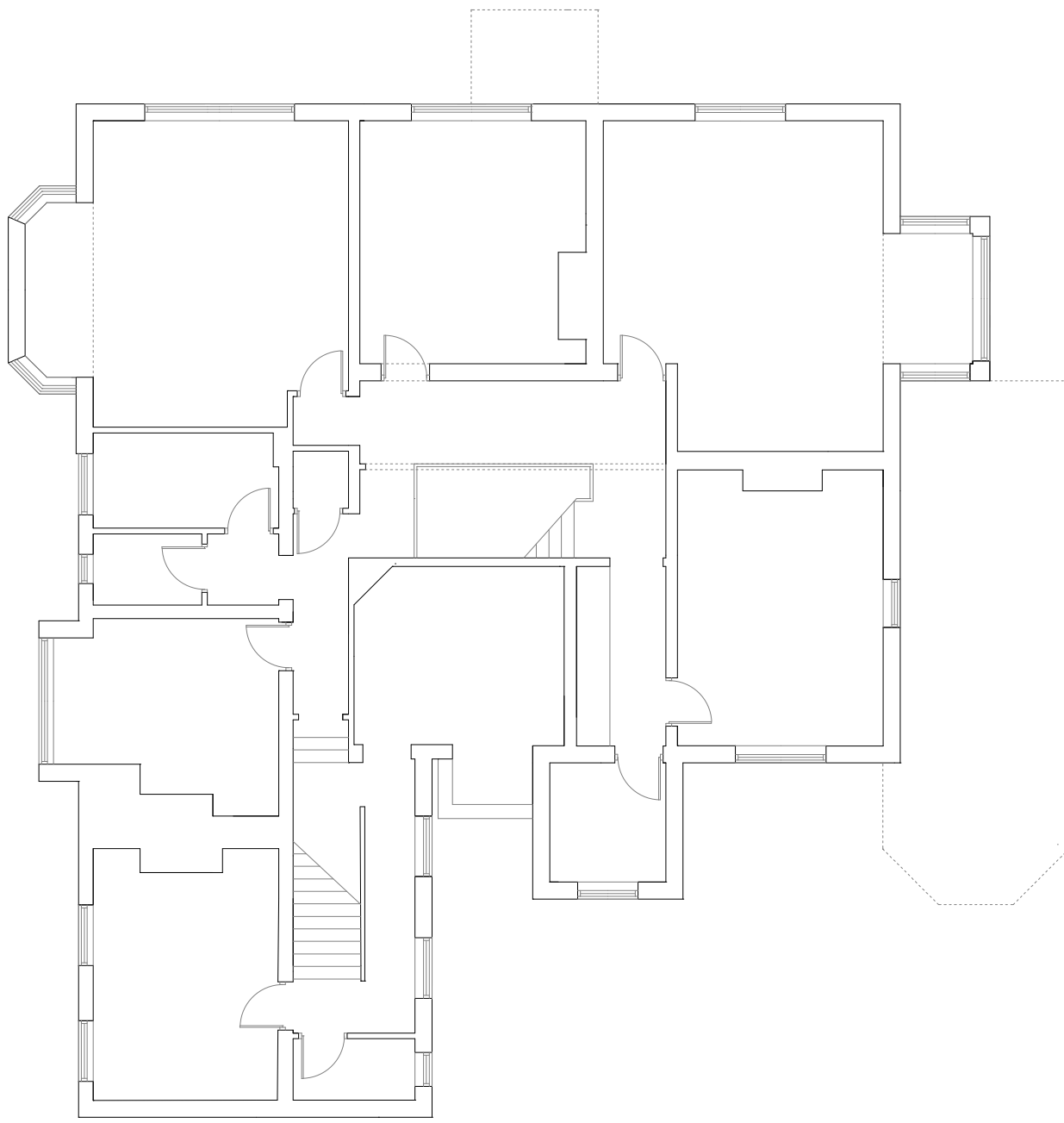
 Copyright 2019 Edgar Architects



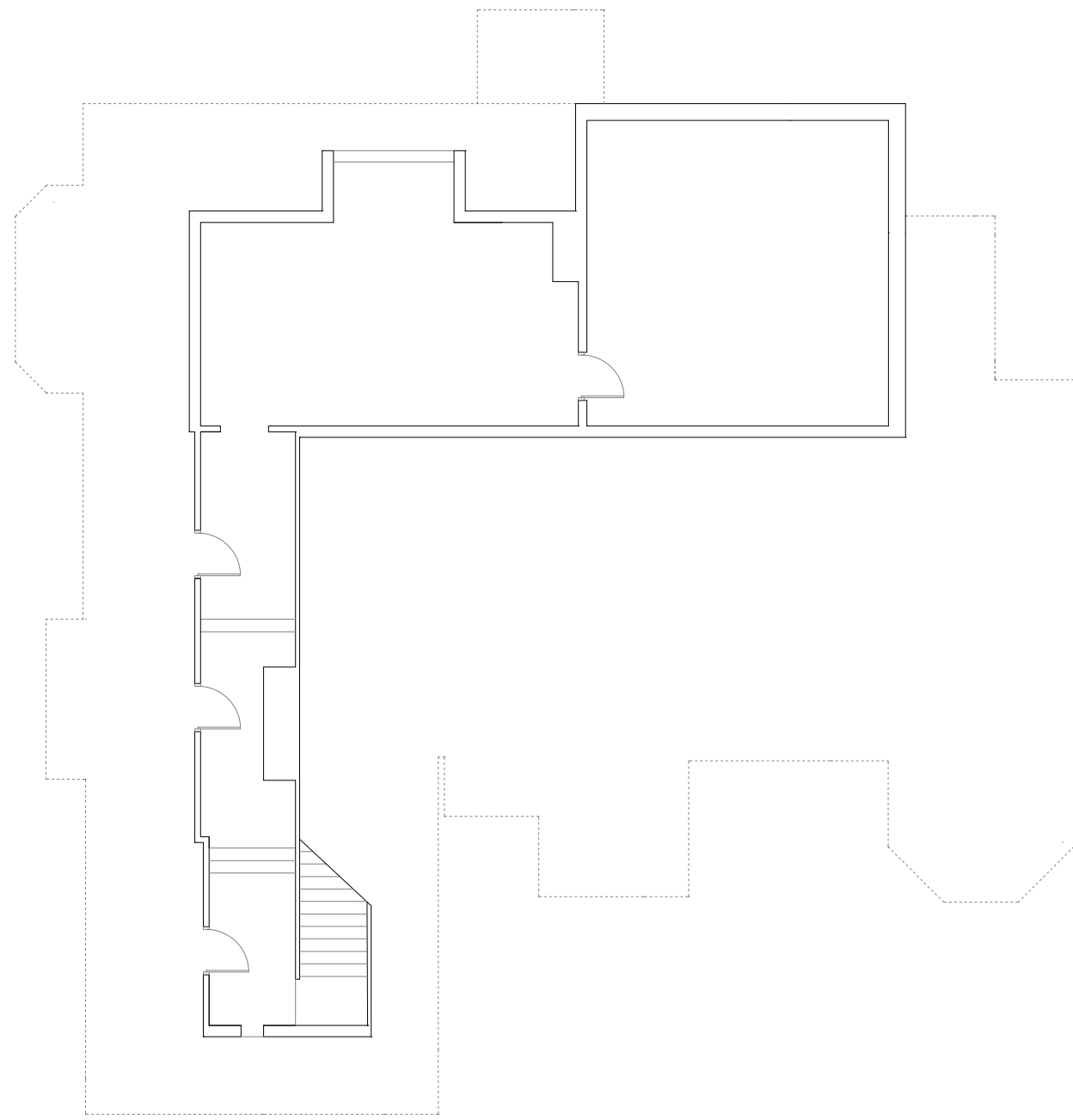
BASEMENT PLAN



GROUND FLOOR PLAN



FIRST FLOOR PLAN



ATTIC FLOOR PLAN



NORTH WEST ELEVATION



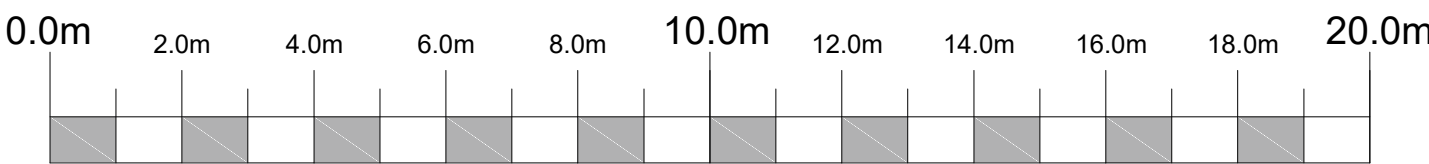
SOUTH EAST ELEVATION



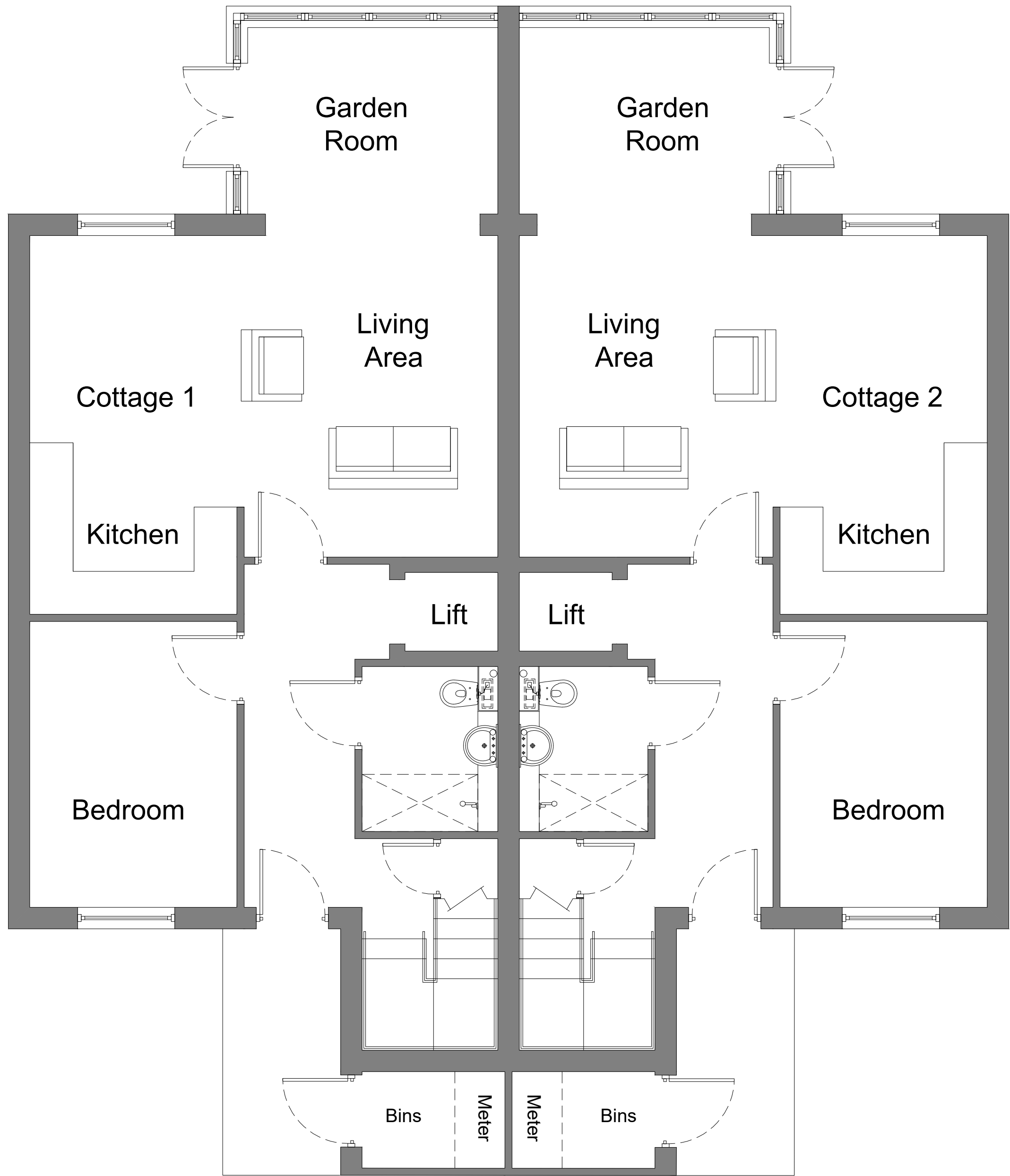
NORTH EAST ELEVATION



SOUTH WEST ELEVATION

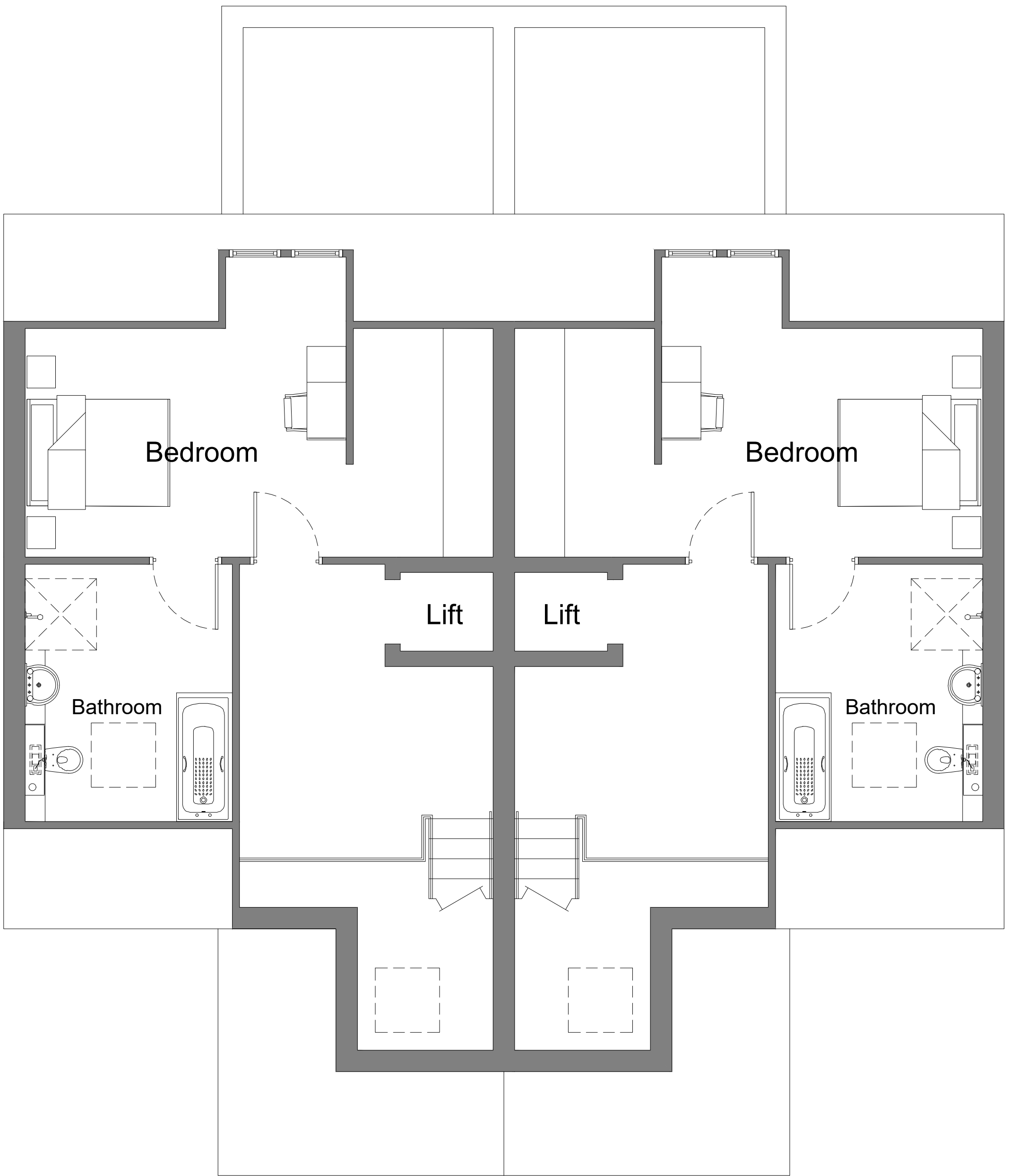


B	12/03/21	Drawing has been updated.	CM	JB
A	13/03/20	Scale Bar added	JB	JB
-	03/01/20	Original Drawing	JB	JB
Rev	Date	Revision Description	Drawn By	Approved By
<div><div><div><div><div></div><div></div><div></div></div><div>ARCHITECTS</div></div><div><div>6 Pioneer Court, Darlington, DL1 4WD</div><div>t: 01325 464 111</div><div>e: studio@adgarchitects.co.uk</div><div>w: www.adgarchitects.co.uk</div></div></div></div>				
Client				
The Halebourne Group				
Project Information				
Proposed Care Development				
The Grey House Preparatory School, Hartley Wintney				
Drawing Title				
Existing building plans and elevations				
School Building				
A1 Scale		A3 Scale		
1:100		1:200		
Job Number	Drawing Number		Revision	
H.19.12	00-9		B	
Drawing Issue				
PLANNING				
© Copyright 2018 ADG Architects Ltd				



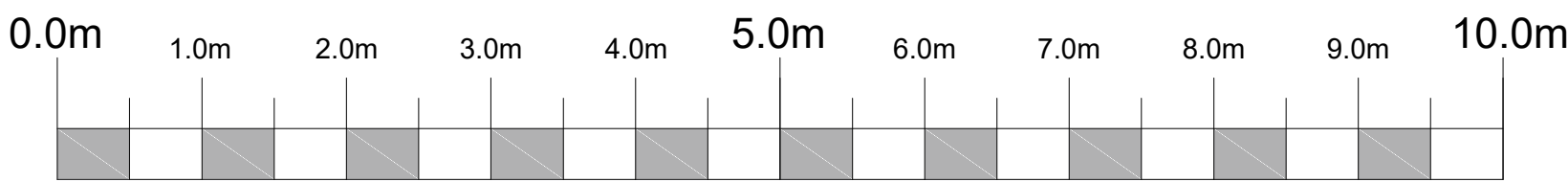
Proposed Ground Floor Plan

Total Floor Area - 75.6m²



Proposed First Floor Plan

Total Floor Area - 46.7m²



G	15/02/21	Layout has been revised to suit the clients comments	CM	JB
F	11/12/20	Layout has been revised to suit the clients comments	JB	JB
E	10/12/20	Layout has been revised to suit the clients comments	JB	JB
D	07/12/20	Layout has been revised to suit the elevations	JB	JB
C	25/10/20	Window has been omitted adjacent to the staircase	JB	JB
B	21/10/20	Window has been omitted adjacent to the staircase	JB	JB
A	19/10/20	Layout has been revised to accommodate the clients comments	JB	JB
-	14/10/20	Original Drawing	JB	JB
Rev	Date	Revision Description	Drawn By	Approved By

6 Pioneer Court, Darlington, DL1 4WD
t: 01325 464 111
e: studio@adgarchitects.co.uk
w: www.adgarchitects.co.uk

Client:

The Halebourne Group

Project Information

Proposed Care Development
The Grey House Preparatory School, Hartley Wintney

Drawing Title

Proposed Care Bungalow Floor Plans
4 No. Bungalows on Development

A1 Scale	1:50	A3 Scale	1:100
Job Number	H.19.12	Drawing Number	(00) 6
		Revision	G

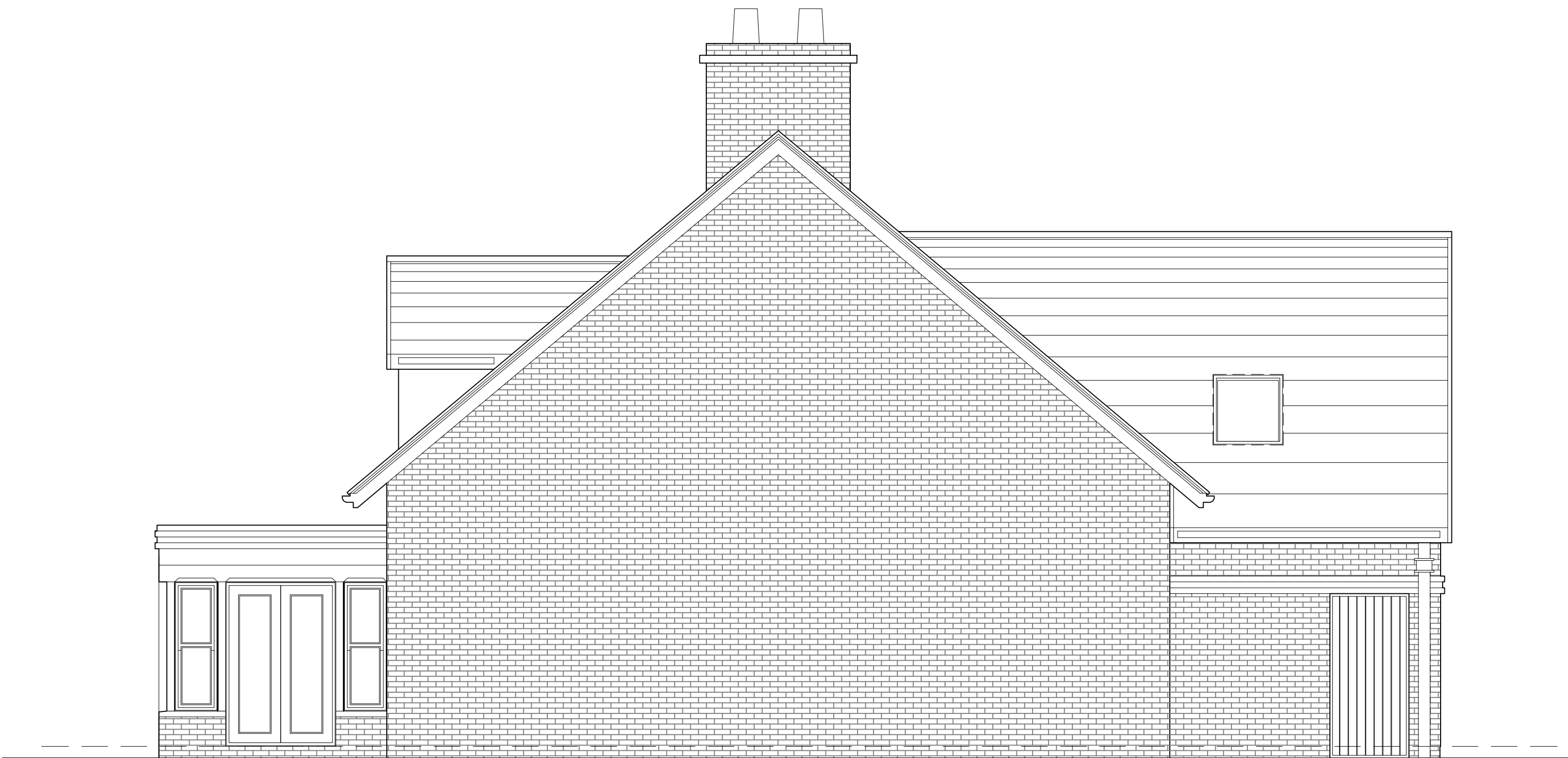
Drawing Issue

PLANNING

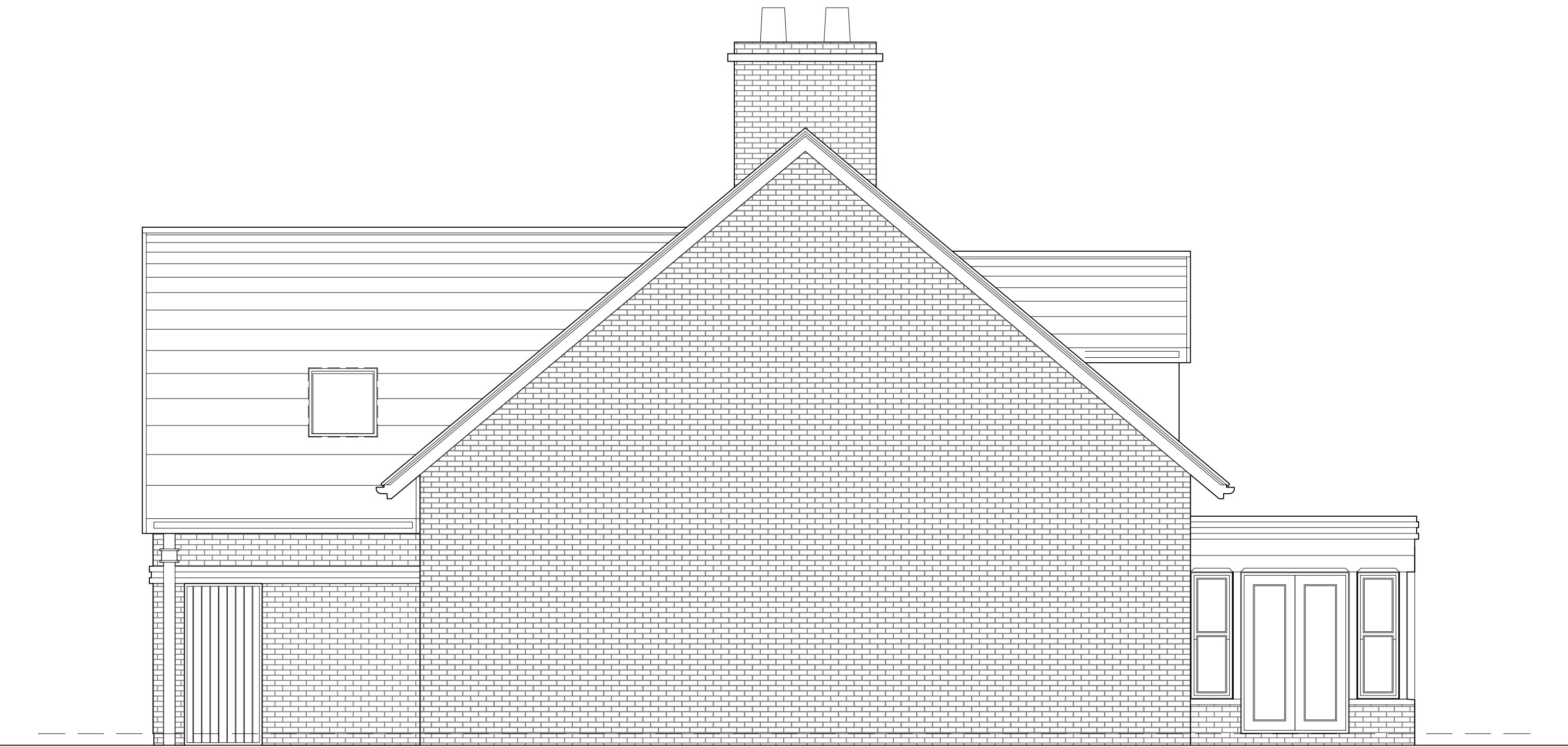
© Copyright 2018 ADG Architects Ltd.



Proposed Front Elevation



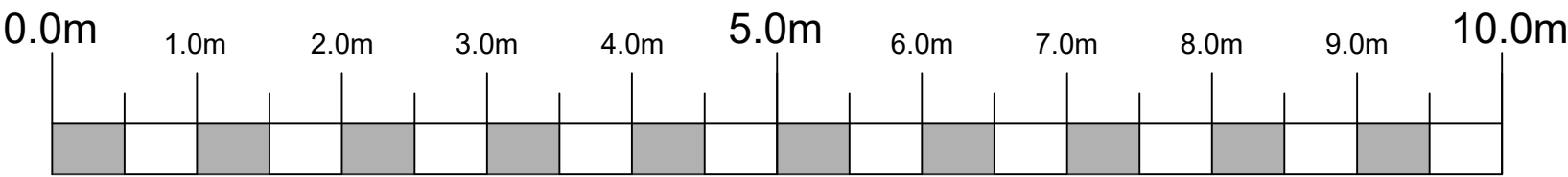
Proposed Side Elevation



Proposed Side Elevation



Proposed Rear Elevation



C	04/08/21	Elevations have been updated to accommodate the design	JB	JB
B	11/12/20	Elevations have been updated	JB	JB
A	10/12/20	Elevations have been updated	JB	JB
-	02/12/20	Original Drawing	JB	JB

Rev	Date	Revision Description	Drawn By	Approved By

6 Pioneer Court, Darlington, DL1 4WD
t: 01325 464 111
e: studio@adgarchitects.co.uk
w: www.adgarchitects.co.uk

Client

The Halebourne Group

Project Information

Proposed Care Development
The Grey House Preparatory School, Hartley Wintney

Drawing Title

Proposed Care Bungalow Elevations

A1 Scale

1:50

A3 Scale

1:100

Job Number

H.19.12

Drawing Number

(21) 5

Revision

C

Drawing Issue

PLANNING

Copyright 2018 ADG Architects Ltd

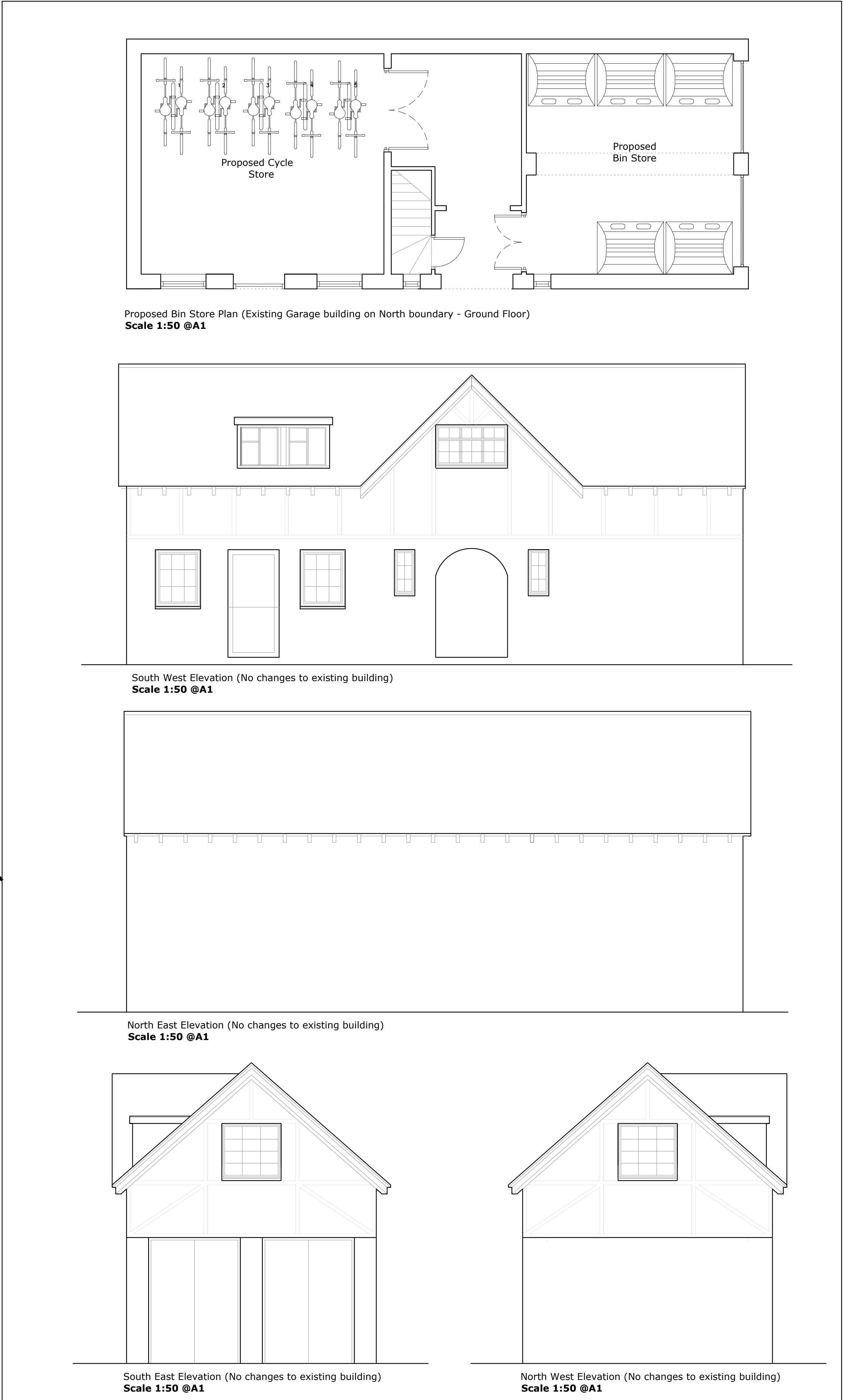


G	05/08/21	Landscaping scheme has been updated.	CM	JB
F	17/06/21	Gradient lines have been added and fence adjusted	CM	JB
E	08/06/21	Cycle Store relocated into existing garage building, car parking layout has been amended to provide footpath to Bin / Cycle Store.	CM	JB
D	03/06/21	Roof Plan has been updated	JB	JB
C	19/05/21	Secure boundary fencing has been added	CM	JB
B	18/03/21	Car Charging Points have been added.	CM	JB
A	15/02/21	Layout has been updated to accommodate clients comments.	CM	JB
-	10/11/20	Original Drawing	JB	JB
Rev	Date	Revision Description	Drawn By	Approved By




ARCHITECTS
6 Pioneer Court, Darlington, DL1 4WD
t: 01325 464 111
e: studio@adgarchitects.co.uk
w: www.adgarchitects.co.uk

Client: The Halebourne Group		
Project Information Proposed Care Development The Grey House Preparatory School, Hartley Wintney		
Drawing Title Proposed 65 Bed Care Home and 4 No. Care Bungalows Landscape Scheme		
A1 Scale 1:250	A3 Scale 1:500	
Job Number H.19.12	Drawing Number (9-) 5	Revision G
Drawing Issue PLANNING		



Rev	08/06/21	Cycle store relocated into existing building, with Bin Store and Recycling Storage facilities. Original Drawing	CM	JB
Rev	12/03/21		CM	JB
Rev	Date	Revision Description	Drawn By	Approved By



ADG ARCHITECTS
 6 Pioneer Court, Darlington, DL1 4WD
 t: 01325 464 111
 e: studio@adgarchitects.co.uk
 w: www.adgarchitects.co.uk

Client

The Halebourne Group

Project Information

Proposed Care Development
The Grey House Preparatory School, Hartley Wintney

Drawing Title

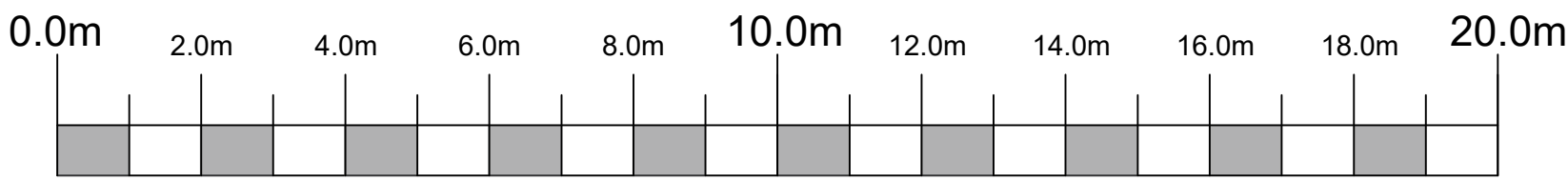
Proposed 70 Bed Care Home and 4 No. Care Bungalows
Proposed Bin and Cycle Store

A1 Scale	1:25 / 1:250	A3 Scale	1:50 / 1:500
Job Number	H.19.12	Drawing Number	(90-) 1
		Revision	A

Drawing Issue

PLANNING

© Copyright 2018 ADG Architects Ltd



Proposed Ground Floor Plan

Total Floor Area - 1499m²
Total Dayspace - 234.4m²
Number of Bedrooms - 25



J	01/06/21	Layout has been revised to accommodate the consultee comments	JB	JB
I	25/10/20	Layout has been revised to accommodate the clients comments	JB	JB
H	21/10/20	Layout has been revised to accommodate the clients comments	JB	JB
G	19/10/20	Layout has been revised to accommodate the clients comments	JB	JB
F	14/10/20	Layout has been revised to accommodate the clients comments	JB	JB
E	12/10/20	Layout has been revised to accommodate the clients comments	JB	JB
D	07/10/20	Layout has been revised to accommodate the clients comments	JB	JB
C	28/08/20	Layout has been revised to show a 70 bed care home	JB	JB
B	03/12/19	Layout has been revised to accommodate the clients comments	JB	JB
A	22/10/19	Layout has been revised to accommodate the clients comments	JB	JB
-	14/10/19	Original Drawing	JB	JB
Rev	Date	Revision Description	Drawn By	Approved By

6 Pioneer Court, Darlington, DL1 4WD
t: 01325 464 111
e: studio@adgarchitects.co.uk
w: www.adgarchitects.co.uk

Client:

The Halebourne Group

Project Information

Proposed Care Development
The Grey House Preparatory School, Hartley Wintney

Drawing Title

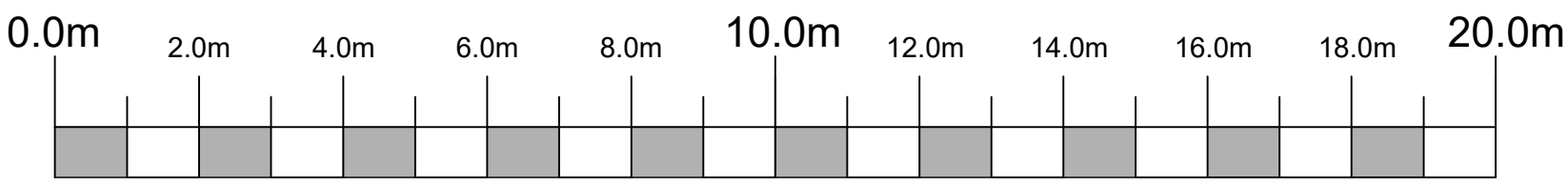
Proposed Ground Floor Plan
65 Bed Care Home

A1 Scale	1:100	A3 Scale	1:200		
Job Number	H.19.12	Drawing Number	(00) 3	Revision	J

Drawing Issue

PLANNING

© Copyright 2018 ADG Architects Ltd



Proposed First Floor Plan

Total Floor Area - 1471m²

Total Dayspace - 238.1m²

Number of Bedrooms - 29



K	15/10/11	Layout has been revised to accommodate the Parish Council comments	JB	JB
J	01/06/21	Layout has been revised to accommodate the consultee comments	JB	JB
I	25/10/20	Layout has been revised to accommodate the clients comments	JB	JB
H	21/10/20	Layout has been revised to accommodate the clients comments	JB	JB
G	19/10/20	Layout has been revised to accommodate the clients comments	JB	JB
F	14/10/20	Layout has been revised to accommodate the clients comments	JB	JB
E	12/10/20	Layout has been revised to accommodate the clients comments	JB	JB
D	07/10/20	Layout has been revised to accommodate the clients comments	JB	JB
C	28/08/20	Layout has been revised to show a 70 bed care home	JB	JB
B	03/12/19	Layout has been revised to accommodate the clients comments	JB	JB
A	22/10/19	Layout has been revised to accommodate the clients comments	JB	JB
-	14/10/19	Original Drawing	JB	JB
Rev	Date	Revision Description	Drawn By	Approved By

ARCHITECTS

6 Pioneer Court, Darlington, DL1 4WD

t: 01325 464 111

e: studio@adgarchitects.co.uk

w: www.adgarchitects.co.uk

Client:

The Halebourne Group

Project Information

Proposed Care Development
The Grey House Preparatory School, Hartley Wintney

Drawing Title

Proposed First Floor Plan
65 Bed Care home

A1 Scale

1:100

A3 Scale

1:200

Job Number

H.19.12

Drawing Number

(00) 4

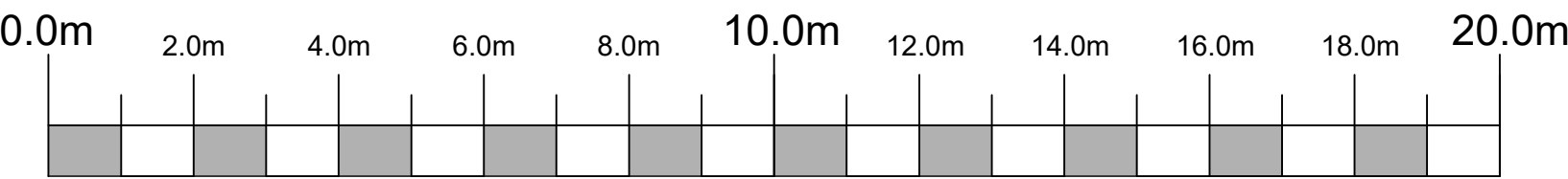
Revision

K

Drawing Issue

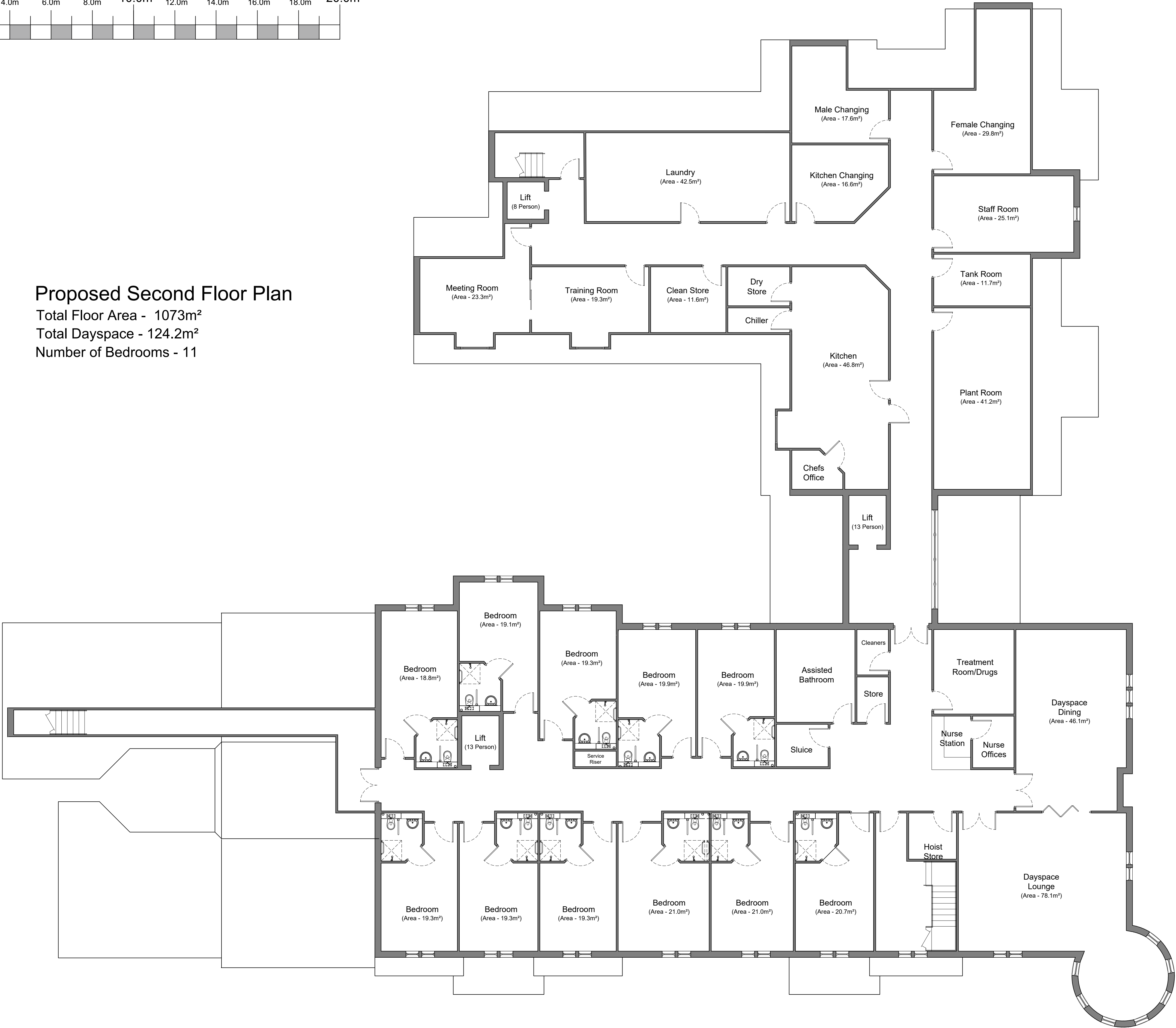
PLANNING

© Copyright 2018 ADG Architects Ltd.



Proposed Second Floor Plan

Total Floor Area - 1073m²
Total Dayspace - 124.2m²
Number of Bedrooms - 11



K	15/10/21	Layout has been revised to accommodate the Parish Council comments	CM	JB
J	01/06/21	Layout has been revised to accommodate the consultee comments	CM	JB
I	19/05/21	Layout has been revised to accommodate the clients comments	CM	JB
H	15/02/21	Layout has been revised to accommodate the clients comments	CM	JB
G	21/10/20	Layout has been revised to accommodate the clients comments	JB	JB
F	19/10/20	Layout has been revised to accommodate the clients comments	JB	JB
E	14/10/20	Layout has been revised to accommodate the clients comments	JB	JB
D	12/10/20	Layout has been revised to accommodate the clients comments	JB	JB
C	28/08/20	Layout has been revised to show a 70 bed care home	JB	JB
B	03/12/19	Layout has been revised to accommodate the clients comments	JB	JB
A	22/10/19	Layout has been revised to accommodate the clients comments	JB	JB
-	14/10/19	Original Drawing	JB	JB
Rev	Date	Revision Description	Drawn By	Approved By

6 Pioneer Court, Darlington, DL1 4WD
t: 01325 464 111
e: studio@adgarchitects.co.uk
w: www.adgarchitects.co.uk

Client:
The Halebourne Group

Project Information
Proposed Care Development
The Grey House Preparatory School, Hartley Wintney

Drawing Title
Proposed Second Floor Plan
65 Bed Care Home

A1 Scale
1:100

A3 Scale
1:200

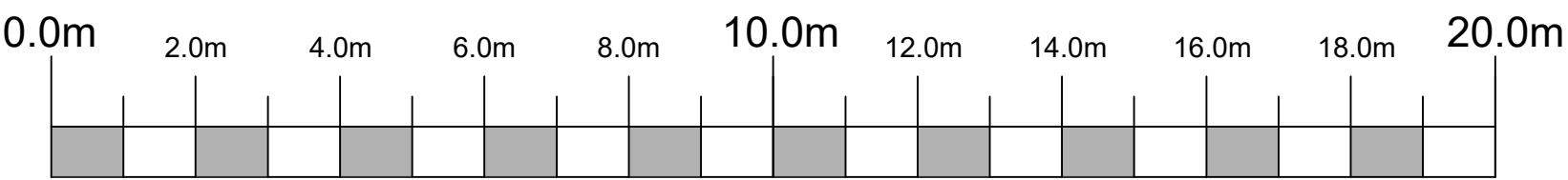
Job Number
H.19.12

Drawing Number
(00) 5

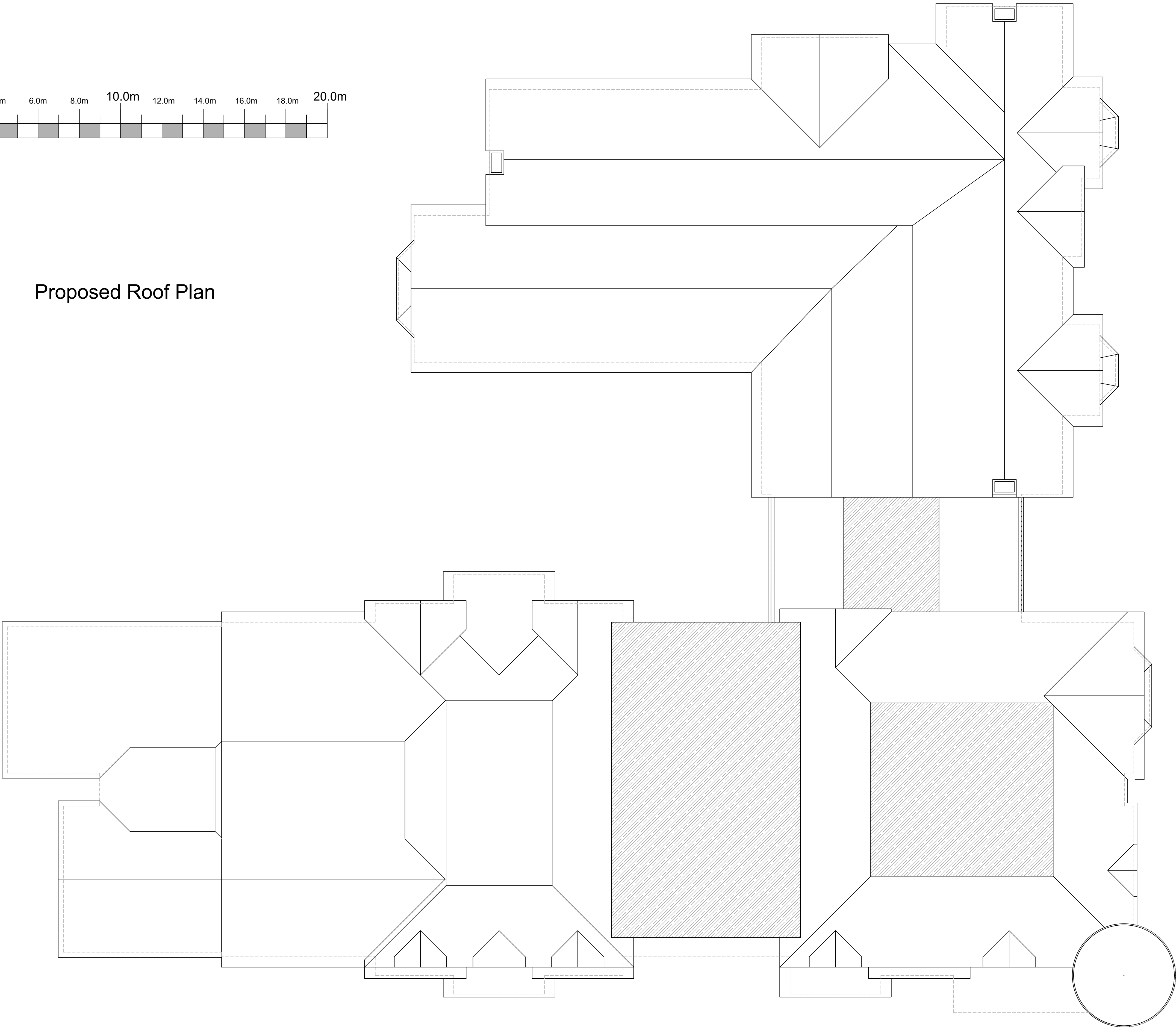
Revision
K

Drawing Issue
PLANNING

© Copyright 2018 ADG Architects Ltd



Proposed Roof Plan



C	08/11/21	Layout has been updated to reflect the current elevation drawings.	CM	JB
B	01/06/21	Layout has been updated to reflect the current elevation drawings.	CM	JB
A	15/02/21	Layout has been updated to reflect the current elevation drawings.	CM	JB
-	10/11/20	Original Drawing	JB	JB
Rev	Date	Revision Description	Drawn By	Approved By

ARCHITECTS

6 Pioneer Court, Darlington, DL1 4WD

t: 01325 464 111

e: studio@adgarchitects.co.uk

w: www.adgarchitects.co.uk

Client

The Halebourne Group

Project Information

Proposed Care Development
The Grey House Preparatory School, Hartley Wintney

Drawing Title

Proposed Roof Plan
65 Bed Care Home

A1 Scale

1:100

A3 Scale

1:200

Job Number

H.19.12

Drawing Number

(27) 1

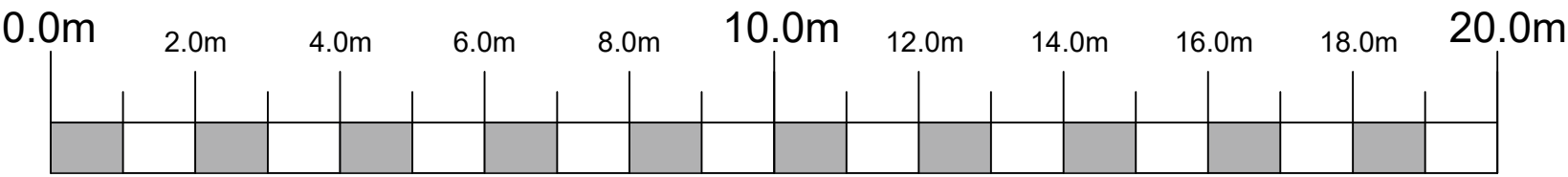
Revision

C

Drawing Issue

PLANNING

© Copyright 2018 ADG Architects Ltd.



Proposed North West Elevation



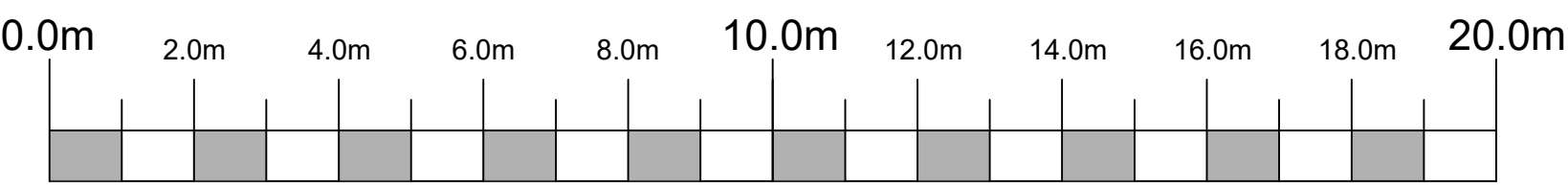
Proposed North East Elevation

I	01/06/21	Elevations have been updated to reduce the building along the boundary on the North East Elevation	CM	JB
H	15/03/21	Elevations have been updated.	CM	JB
G	15/02/21	Elevations have been updated to accommodate the clients comments	CM	JB
F	21/10/20	GFL to FFL has been lifted by 150mm	JB	JB
E	21/10/20	Elevations have been updated to accommodate the clients comments	JB	JB
D	19/10/20	Elevations have been updated to accommodate the clients comments	JB	JB
C	14/10/20	Elevations have been updated to accommodate the clients comments	JB	JB
B	12/10/11	Elevations have been updated to accommodate the clients comments	JB	JB
A	07/10/20	Elevations have been updated to accommodate the clients comments	JB	JB
-	14/10/19	Original Drawing	JB	JB
Rev	Date	Revision Description	Drawn By	Approved By



ARCHITECTS
6 Pioneer Court, Darlington, DL1 4WD
t: 01325 464 111
e: studio@adgarchitects.co.uk
w: www.adgarchitects.co.uk

Client: The Halebourne Group		
Project Information Proposed Care Development The Grey House Preparatory School, Hartley Wintney		
Drawing Title Proposed North East and North West Elevations 65 Bed Care Home		
A1 Scale 1:100	A3 Scale 1:200	
Job Number H.19.12	Drawing Number (21) 2	Revision I
Drawing Issue PLANNING		



Proposed South West Elevation



Proposed South East Elevation

L	15/10/21	Further amendments to the roof heights to reduce the building heights in line with the Parish Councils comments	CM	JB
K	11/10/21	Further amendments to the roof heights to reduce the building heights in line with the Parish Councils comments	CM	JB
J	01/06/21	Elevations have been updated to reduce the building along the boundary on the South West Elevation	CM	JB
I	19/05/21	Elevations have been updated to reduce the building along the boundary on the South West Elevation	CM	JB
H	15/03/21	Elevations have been updated.	CM	JB
G	12/03/21	Elevation has been revised to accommodate the clients comments	CM	JB
F	15/02/21	Elevation has been revised to accommodate the clients comments	CM	JB
E	21/10/20	GFL to FFL has been lifted by 150mm	JB	JB
D	19/10/20	Elevation has been revised to accommodate the clients comments	JB	JB
C	12/10/20	Elevation has been revised to accommodate the clients comments	JB	JB
B	09/10/20	Turret elevation has been updated	JB	JB
A	07/10/20	Elevations have been updated to accommodate the clients comments	JB	JB
-	14/10/19	Original Drawing	JB	JB
Rev	Date	Revision Description	Drawn By	Approved By

ARCHITECTS

6 Pioneer Court, Darlington, DL1 4WD

t: 01325 464 111

e: studio@adgarchitects.co.uk

w: www.adgarchitects.co.uk

Client:

The Halebourne Group

Project Information

Proposed Care Development
The Grey House Preparatory School, Hartley Wintney

Drawing Title

Proposed South East and South West Elevations
65 Bed Care Home

A1 Scale

1:100

A3 Scale

1:200

Job Number

H.19.12

Drawing Number

(21) 1

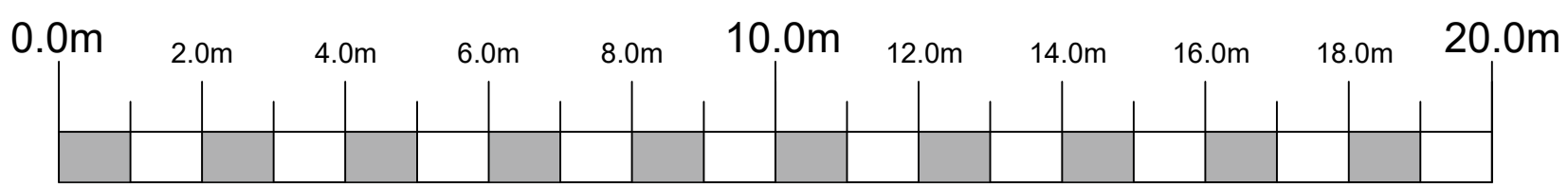
Revision

L

Drawing Issue

PLANNING

© Copyright 2018 ADG Architects Ltd



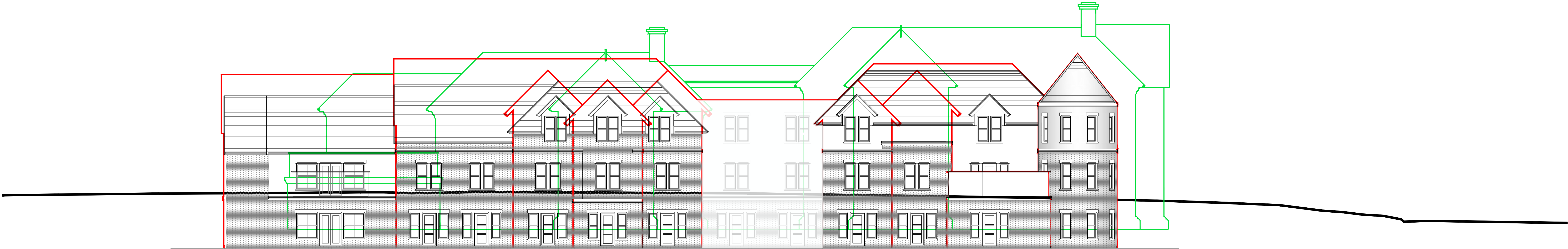
Plan Outline of Original Planning Application
(Ref: 20/00330/FUL)

Plan Outline Originally Submitted in 2021
(Ref:21/00630/FUL)

1.8m High fence line along boundary line



Proposed South West Elevation



Proposed South West Elevation - Planning Application Overlay



Proposed South West Elevation

F	15/10/21	Elevation heights have been adjusted in line with the Parish Council comments	CM	JB
E	11/10/21	Elevation heights have been adjusted in line with the Parish Council comments	CM	JB
D	20/09/21	Elevations have been updated to show previous planning applications	CM	JB
C	16/07/21	Elevations have been updated to show the render adjusted	CM	JB
B	01/06/21	Elevations have been updated to show the reduced height	CM	JB
A	15/02/21	Key added to annotate drawing	CM	JB
-	17/11/20	Original Drawing	JB	JB

Rev	Date	Revision Description	Drawn By	Approved By

ARCHITECTS

8 Pioneer Court, Dartington, GL1 4WD
t: 01325 464 111
e: studio@adgarchitects.co.uk
w: www.adgarchitects.co.uk

Client

The Halebourne Group

Project Information

Proposed Care Development
The Grey House Preparatory School, Hartley Wintney

Drawing Title

Proposed South West Elevations
65 Bed Care Home

A1 Scale

1:100 @ A0

A3 Scale

1:200

Job Number

H.19.12

Drawing Number

(21) 3

Revision

F

Drawing Issue

PLANNING

© Copyright 2018 ADG Architects Ltd